



BBS Family Weekly Bulletin for Summer Term

Week Beginning Monday 29th April 2024

Diary: Monday 8th April 2024 – Friday 19th July 2024

Event Date and Time	Event	Who is it for?	Location
Monday 6 th May 2024	Bank Holiday	Whole School	
Monday 27 th May 2024 – Friday 31 st May 2024	Half Term	Whole School	
Wednesday 12 th June 2024 –	KS4 Induction Evening	Current Year 9 students & Parents/Carers	New Hall
Friday 28 th June 2024	Year 11 Leavers Prom	Current Year 11s	Ford Hall Lilleshall
Monday 8 th July 2024 – Thursday 18 th July 2024	Year 10 Work Experience	Current Year 10s	
Saturday 13 th July 2024 – Wednesday 31 st July	India Expedition	India Trip Group	
Friday 19 th July 2024	Last Day of Summer Term	Whole School	



Dear Families,

Another busy week at BBS with Year 10 starting their end of Year 10 examinations. It is great to see students taking time to revise thoroughly for these assessments and we look forward to providing feedback to them very soon. Our Year 11 students continue their revision and preparations for the forthcoming examinations, including a Mathematics 'Hangout' intervention programme led by tutors from the University of Wolverhampton. If any students are feeling anxious or stressed, our pastoral team are on hand to provide support in the lead up to, and during, the examination period.

Our staff have been very busy again with leading various events, including a Duke of Edinburgh trip last weekend, a Geography field trip and lots of sporting fixtures. The list of our extra-curricular activities is shared with students regularly and they are always encouraged to take part in these types of activities.

Have a great weekend.

Mr Kelay

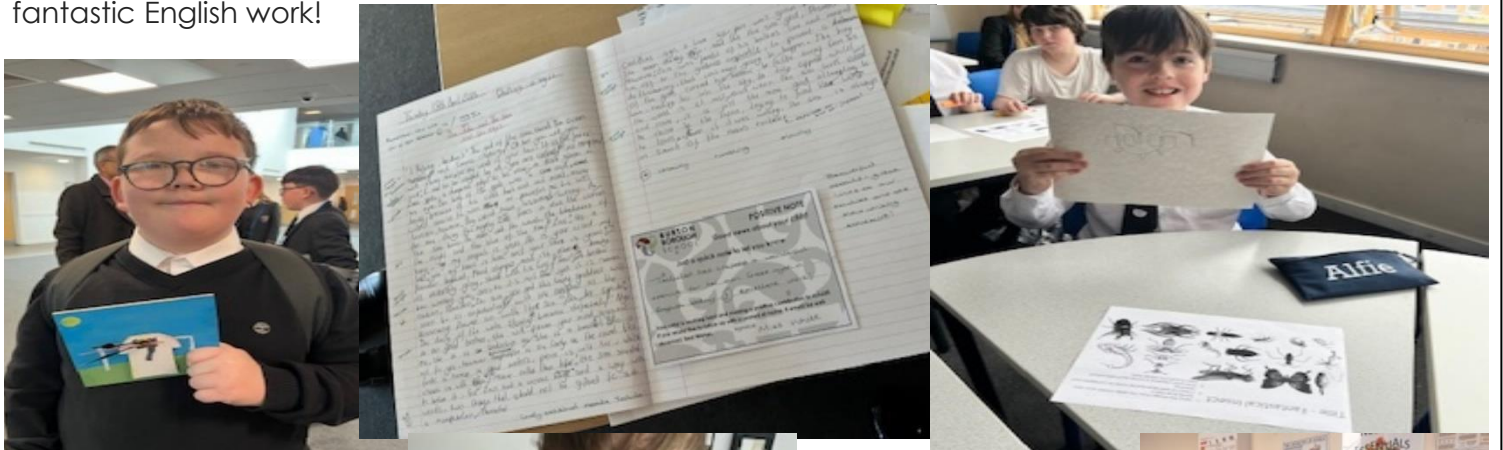
Year 9 Duke of Edinburgh

Our fabulous Year 9 students completed their navigation training for their Bronze Duke of Edinburgh Award last Friday. They were all brilliant. Well done everyone!



Year 7

Our lovely Year 7 students have been busy again! More clock making, cooking, bug artwork, and fantastic English work!



KS3 Achievement Centre 'Shout Outs'!



Year 8, Alfie Thompson (left) has been working super hard in the KS3 Achievement Centre completing some numeracy over learning. Well done Alfie!



Year 9, Evie Mellaard (right) was chosen to attend our 'Hot Choc Friday' in the KS3 Achievement Centre. She has shown AMAZING resilience and worked so hard since Easter! Huge well-done Evie! Below Lexi and Jade show off their positive notes, congratulations!



Well-deserved hot chocolate Year 8's.

Bronze Duke of Edinburgh Awards

Congratulation to Harrison Thorpe and Katie Woodman who have completed their Bronze Dule of Edinburgh Award, Well done to both of you, a great achievement!

Unsure who to contact?

Find the Communication Pathways Document [here](#).



Dinner Voucher (Available for Lunchtime only)

From Monday we will be returning to our previous system, whereby if a child has no money available for lunch, they can collect a voucher from their Head of Year to the value of £1.80. This will enable your child to receive a Small Pasta Pot and a Bottle of Water/Flavoured water.

This cost will then be uploaded onto the student's ScoPay account for the parent/carer to be able to refund alongside topping up their everyday card, to enable them to purchase food the following day.

Many thanks

R Barton
Business Manager



Year 7

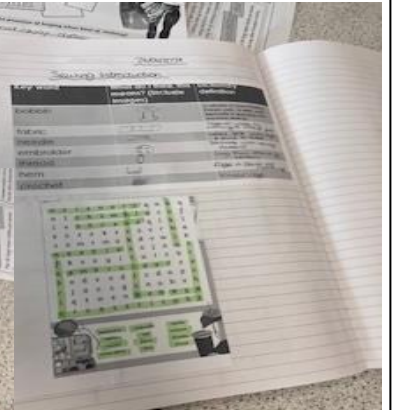
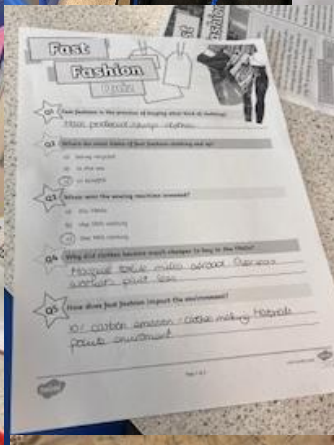
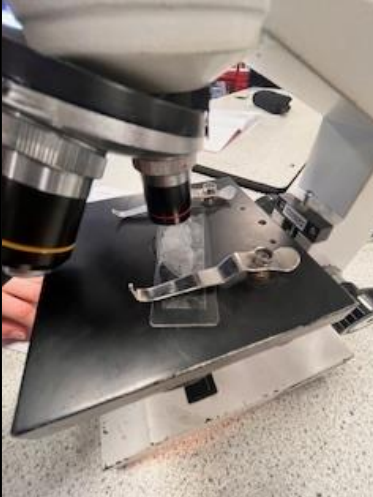
Cakes in the canteen have been a favourite of year 7.



Year 7 PH testing... (right & below)



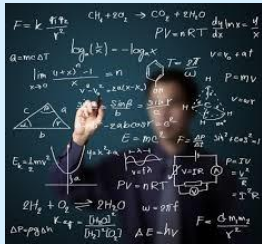
Some 'fast fashion' form Yr. 7



Putting the world under the microscope (above)

Design and designers(right)

Preparing for GCSE Maths

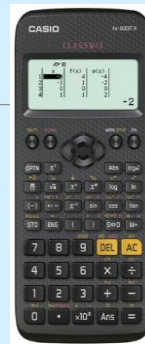


MISS S FEATHERSTONE - HEAD OF MATHEMATICS
MISS M DARBY - SECOND IN MATHEMATICS

Essentials

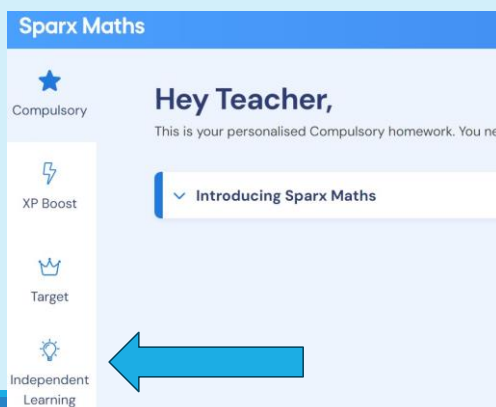
Equipment

- Scientific calculator
- Protractor
- Compass
- Ruler
- Pencil
- Multiple black pens
- Exam packs on Scopay
- Highlighter



Sparx

- Catch up on missed homework
- Bring questions to class teacher or intervention to ask for help



- Use independent learning section to look up topics you're unsure of
- Search topics from your QLA

QLAs

-Use your QLAs from the first and second mocks, identify common topics, ask your class teacher or search things up on Sparx or Youtube.

-Look at the marks you could have achieved on those amber questions!

Questions	Topic	Score	Sparx Code
1a	Interpreting scatter graphs	1 / 1	U277
1b	Interpreting scatter graphs, Using lines of best fit	2 / 2	U277,U128
1c	Interpreting scatter graphs	1 / 1	U277
2	Sharing amounts in a given ratio	4 / 4	U577
3a	Using standard form with positive indices	1 / 1	U330
3b	Using standard form with negative indices	1 / 1	U534
3c	Adding and subtracting numbers in standard form	2 / 2	U290
4	Calculating with rates	3 / 4	U256
5	Special sequences	0 / 3	U680
6a	Probabilities of mutually exclusive events	2 / 2	U683
6b	Probability	2 / 2	U510,U683
7	Finding the area of sectors	0 / 4	U373
8a	Graphs of direct and inverse proportion	0 / 1	U238
8b	Graphs of direct and inverse proportion	0 / 1	U238

GCSE Skills Audit

Unit	Unit / Topic	Complete
1	Calculations, checking and rounding	
	Four operations with decimals and whole numbers	
	Use one calculation to find the answer to another	
	Product rule	
	Rounding & estimation	
	Indices, roots, reciprocals and hierarchy of operations	
	Use index notation including fractional and negative powers	
	Order of operations	
	Factors, multiples and primes	
	Identify factors, multiples and prime numbers	
	Find prime factorisation of a number (& write in index form)	
	Find common factors & highest common factors	
	Find LCM of two (or three) numbers	
	Standard form and surds	
	Index laws to simplify & calculate the value of an expression	
	Convert between ordinary numbers and standard form	
Work with the four operations in standard form		
Use a calculator with indices and standard form		
Simplify surd expressions		

-Ask your teacher for a skills audit, check if there is any topics that you have missed or don't know.

-Attend interventions ready with topics to ask teachers in interventions

QLAs

-Use your QLAs from the first and second mocks, identify common topics, ask your class teacher or search things up on Sparx or Youtube.

-Look at the marks you could have achieved on those amber questions!

Questions	Topic	Score	Sparx Code
1a	Interpreting scatter graphs	1 / 1	U277
1b	Interpreting scatter graphs, Using lines of best fit	2 / 2	U277,U128
1c	Interpreting scatter graphs	1 / 1	U277
2	Sharing amounts in a given ratio	4 / 4	U577
3a	Using standard form with positive indices	1 / 1	U330
3b	Using standard form with negative indices	1 / 1	U534
3c	Adding and subtracting numbers in standard form	2 / 2	U290
4	Calculating with rates	3 / 4	U256
5	Special sequences	0 / 3	U680
6a	Probabilities of mutually exclusive events	2 / 2	U683
6b	Probability	2 / 2	U510,U683
7	Finding the area of sectors	0 / 4	U373
8a	Graphs of direct and inverse proportion	0 / 1	U238
8b	Graphs of direct and inverse proportion	0 / 1	U238

Interventions

Attend ALL interventions with all equipment and a positive mindset.

If you attend we will support you, bring things you want to ask us, bring things you've got wrong in class.

Make a list of topics in class using the lesson title of things that you are struggling with. Use this in intervention!

In the exam...

- Highlight key terms
- Make sure you annotate diagrams
- Draw a diagram if it is useful
- USE YOUR FORMULA SHEET
- Check your question for the format of the answer eg 3 significant figures, or 2 decimal places
- Show all your workings
- Read questions carefully
- Roughly a mark per minute so be aware of the time

Useful Resources

-**School Padlet** online notice board with papers, topic questions and links to resources

padlet.com/BBS_Maths/n9h11a2qxzev

-**MSTeams** to contact teachers

-**Youtube** ask us if you want a particular video

-**Corbett Maths** 5 a day questions free

-**GCSE Bundles** revision guide, workbook and revision cards (£8.90)

-**GCSE Workbooks** (£2.70)

Sporting Events

Well done to our under 14 girls football team who have reached the final of the district cup today after beating Charlton 5-0. They have also reached the final of the county cup. Congratulations, Alix Ralphs (GK), Sophie Lawrence, Brianna Duff, Ava Haycock-Hall, Megan Lock, Holly Appleby, Poppy Vogel, Skye Vogel, Ava Williams, Sophie Fallon, Teya Adams, Macie Harrison, Sophie Woodman, Emily Willets.

The final of the district will be held on the 13th of May at the Bucks Head with a 4:30 pm kick-off. Parents are very welcome to watch, the more support the better! The final of the county cup details will be confirmed soon. Good luck to all involved!

Congratulations on also winning against Ercall Wood 3-2.



Sad news

Peter Boulter – Head Teacher 1991 to 2005

It is with great sadness that we would like to inform our community of the passing last week of Peter Boulter, Head Teacher of BBS from 1991 until 2005

Peter will be known to many of our community. Indeed, he led the school when some of our families were at school here and we know you will remember him with fondness and will be saddened to hear this news. Peter's impact on BBS and our community was wide-reaching. His high standards for everyone in our school community were reflected in his motto 'We expect excellence'. Peter was not only an outstanding leader, empathic, committed and strategic, he was also a man who would ensure that everyone in the school was listened to, always checking in with the canteen staff and cleaners as well as the teaching staff. He was a kind and empathic man – and evoked respect from all who encountered him. He was also an outstanding English teacher - and many of his Year 8 classes will remember Peter standing on the table at times to deliver more dramatic moments within the texts he was teaching.

Peter lost his beloved wife not so long ago – but kept touch with his leadership team, often meeting up with Mr Larkin, Mrs Petts, Mr Williams and Mrs Osborne – names many of you will recognise.

I am sure that you will join us in sending our sincere condolences to his family at this sad time.

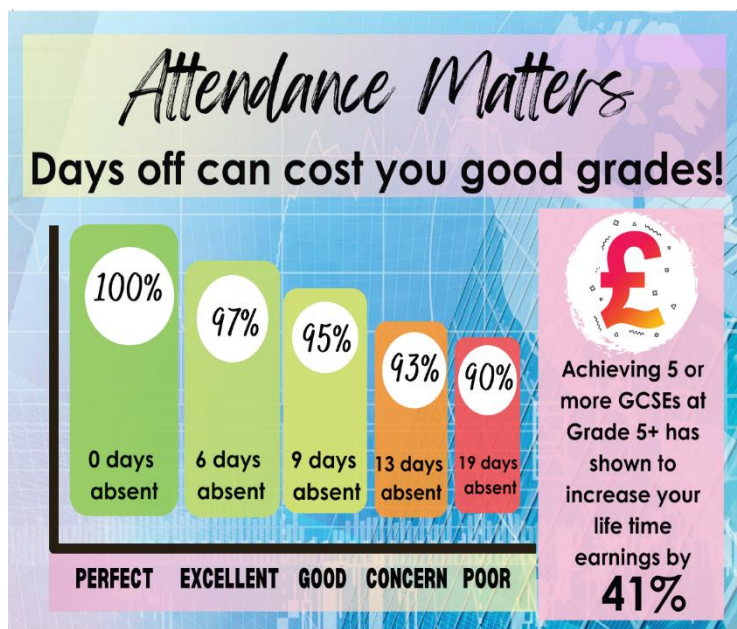
Why is regular attendance so important?

Face-to-face education is important in helping pupils to fulfil their potential. During school time we believe pupils should be in class with their teachers and peers and enjoying all the benefits that brings. Parents or carers of a child have a legal responsibility to ensure their child receives a suitable education. This is usually achieved through regular attendance at school.

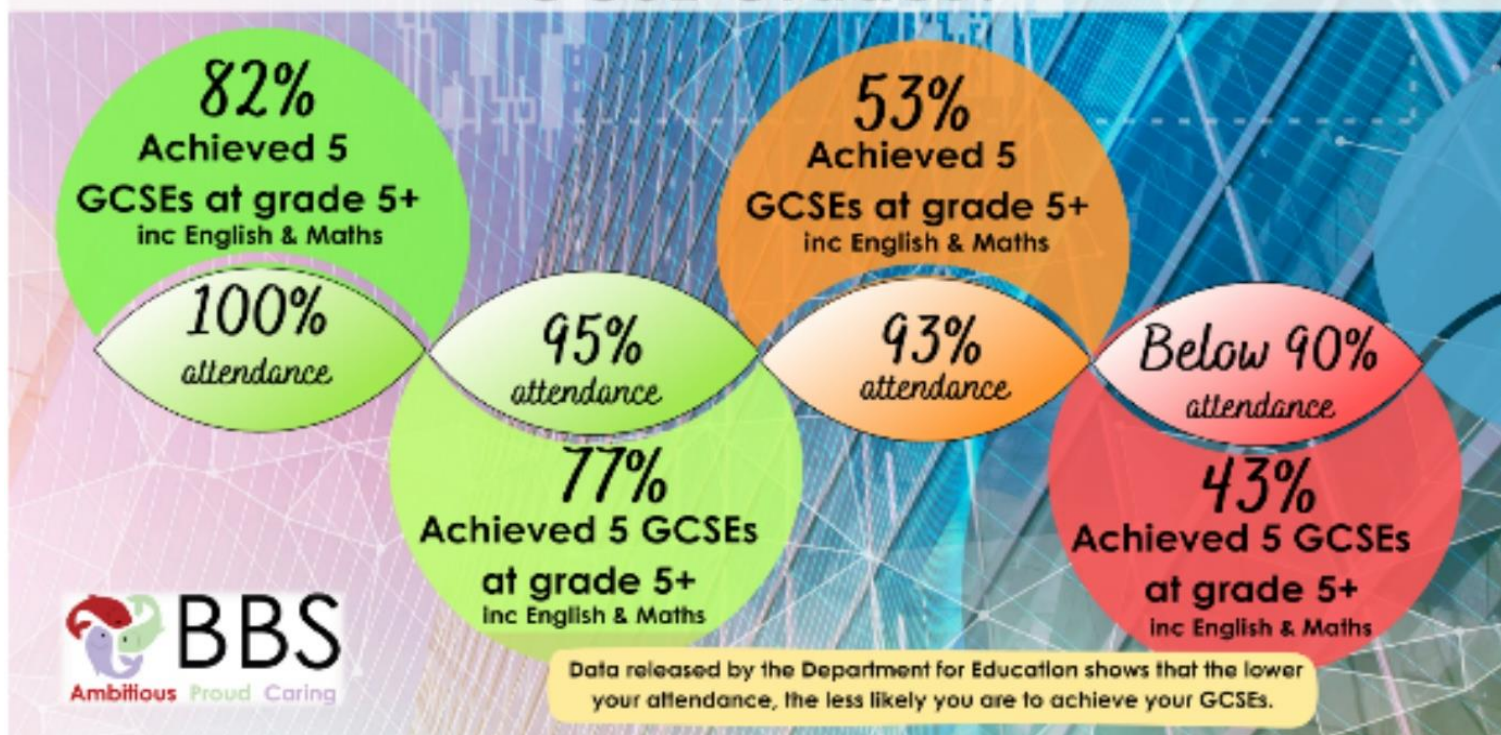
Being in school every day that it is open, is important to your child's achievement, wellbeing, and their wider development. Evidence shows that the students with the highest attendance throughout their time in school gain the best GCSE results.

Here's what the data shows:

- Pupils with higher attainment at KS2 and KS4 had lower levels of absence over the key stage compared to those with lower attainment.
- Pupils who did not achieve the expected standard in reading, writing and maths in 2019 had an overall absence rate of 4.7% over the key stage, compared with 3.5% among pupils who achieved the expected standard and 2.7% among those who achieved the higher standard.
- Pupils who did not achieve grade 9 to 4 in English and maths GCSEs in 2019 had an overall attendance 91% over the key stage, compared with 95% among pupils who achieved a grade 4 and 96% among pupils who achieved grade 9 to 5 in both English and maths.
- Generally, the higher the percentage of sessions missed across the key stage at KS2 and KS4, the lower the level of attainment at the end of the key stage.
- Among pupils with no missed sessions over KS4, 83.7% achieved grades 9 to 4 in English and maths compared to 35.6% of pupils who were persistently absent.



How does your attendance impact your GCSE Grades?



The Hub Prom Pop-Up Event



Thursday May 9th
5:30pm-8pm

Pre-loved Dresses, Suits,
Accessories and Shoes
FREE of charge to make
your prom night magical.

All Year 11's welcome to
bring friends and family
for a relaxed evening of
finding your perfect prom
pieces.

Changing facilities will be
available to ensure your
outfit is perfect.

Any donations of pre-
loved prom items can be
made to The Library.

any questions please
email:
[enquiries@thehubnewpor
t.co.uk](mailto:enquiries@thehubnewport.co.uk)

THE HUB
NEWPORT

All Families – Donations for Prom Pop-Up Shop

Prom Donations Wanted



The Hub Prom Pop-Up
Event Thursday 9th May
from 5:30-8pm

Do you have any pre-loved
prom items you would like
to donate?

Bring them along to the
Library to make this years
prom night even more
special.

We need pre-loved
dresses, suits, accessories,
bags and shoes for our
event, so any donation is
more than appreciated.

We do however urgently
need suits so please keep
this in mind when
donating.

Any questions please
email:
[enquiries@thehubnewpor
t.co.uk](mailto:enquiries@thehubnewport.co.uk)

THE HUB
NEWPORT

Changes to Wellbeing and Mental Health Services at BBS

At BBS, we recognise that students need to be mentally healthy and resilient if they are to be successful and happy in school. As a result, we have strengthened our Wellbeing offer to ensure that it is more visible, available and effective.

All Wellbeing services have been moved into Stem31. This is a large space at the heart of our Inclusion provision. This room is staffed by Emma Fowler, Denise Rogers and Steve Ross. It provides a space for students to access during the school day if they are struggling emotionally or need a calm space to self-regulate. Over 20% of the school cohort are currently receiving some form of Therapy or support from the Wellbeing team.

The Therapy and support available includes;

- 2 counsellors available every Tuesday and Thursday.
- Peer Wellbeing mentors available daily
- School Nurse available every Thursday, including drop-ins at lunchtime in C33.
- Lunch Club for students who are in need of friendship or support available every Wednesday and Friday
- Art Therapy for Refugees available every Friday afternoon
- 3 ELSA trained professionals with appointments available on request.
- Bespoke and modified timetables and individual student support plans for those students who are struggling to access school due to anxiety.
- Family Forums available on a Monday evening throughout the year.

In addition, the Nurture team are working closely with BeeU and House 1 to facilitate student specific support.

If you are concerned about your child's mental health, please contact your child's Head of Year who will make the initial referral to the Wellbeing team. However, should you wish to ask for advice or support for your child, the Wellbeing team can be contacted directly at BBSNurture@taw.org.uk. They are available daily for any student who needs support during the school day.

The Nurture Room also has its own garden which we will be developing into a sensory garden.

Changes to Inclusion Provision at BBS

I wanted to make you aware of some changes that we have made to SEND and Inclusion provision at BBS. We now have the following spaces available for all students who need additional and different support in order to be academically successful.

KS3 Hub (Engage in S30) – This is led by Kirsty Shelley and Donna Haywood. It supports students who are struggling to fully engage due to barriers to learning. Students are provided with a toolkit to help them access learning.

KS4 Hub (Achieve in S41) – This is currently led by Andrea Woodhouse. It supports Key Stage 4 students to achieve their full potential. There is an emphasis on supporting students to gain academic qualifications, including vocational qualifications.

Academic Interventions - This is led by Sarah Wilton. Sarah will be delivering interventions to groups of students to close their learning gaps and support an improvement in their academic attainment. For example, we are already delivering Lexonik (a phonics program) to over 50 KS3 students to drive an increase in their reading age.



Year 7 Notices

Year 8 Notices

Year 9 Notices

Year 10 Notices

Year 11 Notices:

Please see the details in the main bulletin regarding a **Prom Pop-Up Shop** that will be held at The HUB Newport on 9th May. Also, if you have any donations of prom outfits, dresses, suits, bags, shoes etc... details of how you can donate are also in the main bulletin.

Geography and History revision will be held on **Monday's** instead of Thursdays for year 11 students.

BBS Music and Drama Clubs / Bands

TUESDAY	WEDNESDAY	THURSDAY	FRIDAY
<p><u>Choir</u> All years 3.05-4.15pm in MU2</p>	<p><u>Show Rehearsal</u> All years 3.05-4.30pm in New Hall (after Feb halfterm)</p> <p><u>Woodwind Ensemble</u> Invite only 3.15-4.15pm In MU3</p> <p><u>Concert Band</u> Invite only 4.30-5.30pm in MU3</p>	<p><u>Junior Band</u> KS3 woodwind and brass players 3.30-4.30pm in MU3</p>	<p><u>Drama Club</u> All years 3.05-4.15pm in MU3</p>
			
<p>For more information about joining any of these clubs or bands, see staff in the Music & Drama Office</p>			

Extra-Curricular Timetable

These sessions are open to all students. No need to book. See your subject Teacher about which room the session will be held in.

Year	Monday	Tuesday	Wednesday	Thursday	Friday
7	Staff CPD	Athletics JDA/EMP/LTI/MRO	Athletics fixtures 5 th June, 26 th June	Rounds MRO/LTI	
8		Athletics JDA/EMP/LTI/MRO	Athletics fixtures (Invite) 22 nd May, 26 th June	Rounds MRO/LTI	
9		Athletics JDA/EMP/LTI/MRO	Athletics fixtures (Invite) 15 th May, 26 th June	Rounds MRO/LTI	
10		Athletics JDA/EMP/LTI/MRO	Athletics fixtures (Invite) 8 th May, 26 th June	Rounds MRO/LTI	
11		Athletics JDA/EMP/LTI/MRO	Athletics fixture (Invite) 8 th May, 26 th June		GCSE Intervention MRO/JDA CNAT intervention EMP/LTI

Year 10 and Year 11 Revision Timetable

Please note Year 11 Geography and History is now MONDAY and not Thursday as seen below.

BBS Revision Timetable 2023-2024

Year 10

	Tues.	Wed.	Thurs.	Fri.
White Week	Photography Art	English	Geography History RE Music Child Development (<i>invite only</i>) Y11 GCSE PEP	CNAT PE
Blue Week	Maths		Science	Computer Science Enterprise GCSE PE

Year 11

	Tues.	Wed.	Thurs.	Fri.
White Week	Maths MFL	English Music Drama	Science Sociology	Computer Science Enterprise
Blue Week	MFL DT Food (<i>invite only</i>) Photography Art	English Music Drama	RE Child Development (<i>invite only</i>) Geography History Y11 GCSE PEP Sociology	GCSE PE Drama